

The Rockhound Record

Mineralogical Society of Arizona

www.mineralogicalsocietyarizona.org



MEETING LOCATION:

Church of the Beatitudes, 555 W. Glendale Ave., Phoenix, AZ, 85021

UPCOMING PROGRAM
Thursday, January 12, 2012
7:00 p.m.

Australian Opals
Presented by Dr. Raymond Grant

Ray Grant just returned from another trip to Australia, and this will be a very interesting program. There will be a door prize of a jar of Australian opal chips, plus other surprises. Ray always does an excellent program. See you there!



Opal Replacing Shells



Coober Pedy Town Sign



Opal Mine
Coober Pedy

2012 Slate of Officers & Board Members

PRESIDENT - RAY GRANT
VICE PRESIDENT - ED NICHOLS
TREASURER - LYNNE DYER
SECRETARY - MARY PARSONS

BOARD OF GOVERNORS

| NAME | TERM ENDING |
|---------------------|-------------|
| Terry Dyer | 2012 |
| Lois Splendoria | 2012 |
| Dave Lay | 2013 |
| Bob Holm | 2013 |
| Chris Whitney-Smith | 2014 |
| Charles Krog | 2014 |

The club will be voting on new officers and Board of Governors members at our general meeting on Thursday, January 12, 2012. Please plan to attend.



2012 Nominating Committee

Paul Flores, Chairman
Shirley Fiske
Roger Deming

GENERAL MEETING MINUTES

DECEMBER 8, 2011

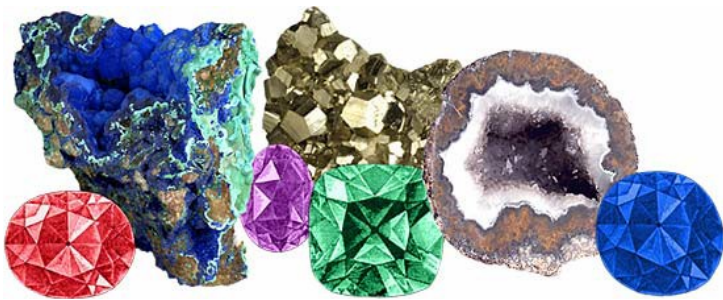
By Mary Parsons
Secretary Pro-Tem

Vice President Ed Nichols called the meeting to order and discussed who has volunteered to run for the open board positions. Paul Flores motioned to postpone the election to the January 2012 meeting so that the Slate of Officers could be published; motion seconded. The motion was carried.

No club is signed up to have a coalition field trip for January 2012.

Betty Deming

**PHOENIX AREA'S
LARGEST GEM AND
MINERAL SHOW
40th FLAGG GEM AND
MINERAL SHOW
(JEWELRY, GEMS,
BEADS, FOSSILS, MINERALS,
AND LAPIDARY SUPPLIES)**



**FREE PARKING
FREE ADMISSION
FRIDAY, SATURDAY, SUNDAY
JANUARY 6, 7, and 8, 2012
9 A.M. TO 5 P.M. EACH DAY**

A GREAT FAMILY EVENT

**FREE ACTIVITIES FOR CHILDREN
(SUCH AS DIG FOR FOSSILS)**

**FREE MINERAL SAMPLES FOR
CHILDREN AND TEACHERS**

**BOOTHS BY LOCAL MINERAL
AND LAPIDARY CLUBS AND
THE SUPERSTITION MOUNTAIN
LOST DUTCHMAN MUSEUM**

**EXHIBITS AND SPECIAL
FLUORESCENT DISPLAY
PERALTA STONES**

**LOTS OF DEALERS SELLING
JEWELRY, BEADS, MINERALS,
FOSSILS, ROCKS**

**MESA COMMUNITY
COLLEGE
WEST PARKING LOT
DOBSON ROAD NORTH OF
THE SUPERSTITION
FREEWAY (ROUTE 60)
MESA, ARIZONA**



Go to www.flaggshow.info
for more information
and directions

Sponsored By



WANTED!

Mineral Specimens for Rock Roulette Wheel

The club needs mineral materials to use on the Rock Roulette Wheel at the Flagg Show on January 6 through 8, 2012 (Friday, Saturday, & Sunday). This show will take place before our January 12, 2012, meeting.

If you would like to donate some material, you are welcome to bring it to the Christmas party on Thursday, December 8, 2011, or bring it to the Flagg Show with you. If you have questions, please call Betty Deming at 602-242-1553. Your donations will be very much appreciated.



WANTED!

Volunteers to Work at the Flagg Gem and Mineral Show

The MSA will once again participate in the Flagg Gem and Mineral Show scheduled for January 6 through 8, 2012, and will be hosting a booth where we will have our Rock Roulette Wheel. Volunteers are needed to man the booth for two-hour shifts, if possible, between the hours of 9:00 a.m. to 5:00 p.m. on Friday, Saturday and Sunday. There will be a signup sheet at the Christmas party. (**EDITOR'S NOTE:** Please see Page 6 of this newsletter for a list of those already signed up.)

ARIZONA MINERAL COLLECTOR NUMBER 144



By Dr. Raymond Grant

This is a heads up for the Tucson Gem and Mineral Show in February. The theme this year is Arizona, because of our 100th anniversary of statehood. If you have any interest in Arizona minerals you don't want to miss this show. The dates are February 9,10,11, and 12. Several things not to miss are the exhibits and the talks. There are 45 special Arizona exhibits plus the special Museum exhibits. A group of Collectors headed by Mark Hay has been planning and meeting for over a year to organize the exhibits. You will see the best display of Arizona minerals ever in one place. There are going to be 20 plus cases devoted to specific Arizona localities, 10 cases for specific Arizona minerals such as wulfenite, gold, silver, and fluorite, and special theme cases. Some of the special cases include: Mineralogical Record cover specimens, minerals from the Columbian Exposition of 1893, gems and lapidary arts from Arizona, Arizona micromounting, and Arizona meteorites. This really a once in a lifetime chance to see the best of Arizona.

There will many talks about Arizona. Every year, Friends of Mineralogy, the Mineralogical Society of America and the Tucson Gem and Mineral Society sponsor a symposium. The theme this year is of course Arizona. The symposium will be on Saturday February 11. The program will be in this bulletin. You can go to any of the club talks or the symposium free. All of the activities on the upper level are free, you only need to pay for admission to the lower level with the dealers and exhibits. If you plan to go to the show more than one day you should join the Tucson Gem and Mineral Society as members can get in free. Go to their website www.tgms.org/tgms.htm for information.

There will also be a new book *Collecting Arizona* available at the show. What I have seen of it so far looks really good with a history of mineral collecting in Arizona and fantastic photographs.

For a complete listing of all of the Tucson shows, go to:
<http://tucsongemandmineralshows.net/2012-tucson-gem-show.htm>

EDITOR'S NOTE: Please refer to Page 7 of this newsletter for more information about the symposium mentioned above.

Dec. 20, 2011 3:10 PM
Subject: Friends of Saddle Mountain "Cancellation"

Dear Friends,

It is with regret that we have to inform you that February 25, 2012, Saddle Mountain Public Lands Appreciation Day has been **cancelled** due to unforeseen circumstances.

We extend our warmest thanks to those of you who had sent your R.S.V.P. and hope that this day will provide you other opportunities.

We hope that everyone will join us at our next Public Lands Appreciation Day tentatively scheduled March 2013. We will send out notice late in the year (2012).

Friends of Saddle Mountain wish you and your organizations the very Best of Holidays and a most prosperous New Year.

Cheers,

Carol Millette, Secretary
 Friends of Saddle Mountain (FoSM)
 3708 N. 339th Ave.
 Tonopah, AZ 85354

Get up, Get out Enjoy Saddle

**VOLUNTEER LIST - MSA BOOTH
 2012 FLAGG SHOW**

FRIDAY, JANUARY 6

| | |
|------------------------|--------------------|
| 9:00 - 11:00 A.M. | Ed Nichols |
| | Bob Holm |
| 11:00 A.M. - 1:00 P.M. | Terry Ullery |
| | OPEN |
| 1:00 - 3:00 P.M. | Lynne & Terry Dyer |
| | OPEN |
| 3:00 - 5:00 P.M. | OPEN |
| | OPEN |

SATURDAY, JANUARY 7

| | |
|------------------------|-----------------|
| 9:00 - 11:00 A.M. | Terry Ullery |
| | OPEN |
| 11:00 A.M. - 1:00 P.M. | Staci Rolfe |
| | Lois Splendoria |
| 1:00 - 3:00 P.M. | Julie Massey |
| | Dave Lay |
| 3:00 - 5:00 P.M. | Betty Deming |
| | OPEN |

SUNDAY, JANUARY 8

| | |
|------------------------|-----------------------|
| 9:00 - 11:00 A.M. | Terry Ullery |
| | OPEN |
| 11:00 A.M. - 1:00 P.M. | Mike Williams |
| | OPEN |
| 1:00 - 3:00 P.M. | Mary Parsons & Alexis |
| | OPEN |
| 3:00 - 5:00 P.M. | Betty Deming |
| | OPEN |

As you can see, there are a lot of "open" slots, so we need more volunteers. It really helps to have at least 3 people in the booth—two running the wheel and taking payments, and one more picking out more stuff to put on the wheel board. If you are interested in volunteering, please call Ed Nichols or Bob Holm (phone numbers on Page 8.)

MINERALS, GEMSTONES, GOLD, HISTORY

The 33rd Tucson Mineralogical Symposium sponsored by the Friends of Mineralogy, the Tucson Gem and Mineral Society and the Mineralogical Society of America will be held on Saturday, February 11, 2012 at the Tucson Convention Center. Admission is free and everyone is welcome. *Minerals of Arizona* is the theme of the 2012 Tucson Show and the subject of the symposium. Arizona became a state in 1912 and statewide celebrations of the Centennial are planned in 2012. The Tucson Show theme and the symposium are a part of this anniversary celebration.

33rd Annual FM-TGMS-MSA Mineralogical Symposium

The Minerals of Arizona

10 a.m. to 4 p.m. - Saturday, February 11, 2012
Crystal Ballroom, Tucson Convention Center

Program

- 10:00 - 10:10 - Welcoming Remarks and Introductions – Symposium co-chairs, Julian Gray and Raymond Grant
- 10:10 – 10:30 – The Mineralogy of Arizona: Past, Present, and Future - Marcus Origlieri and Raymond Grant
- 10:30 – 11:00 - History and Development of Mining in Arizona before Statehood (1912) – Jim McGlasson
- 11:00 – 11:30 - How Minerals from Bisbee helped Arizona gain Statehood – Richard Graeme
- 11:30 – 12:00 - Gemstones of Arizona – Wolfgang Mueller
- 12:00 – 1:30 - **Lunch Break**
- 1:30 – 2:00 – Mines and Minerals of the Amole District, Tucson Mountains, Pima County, Arizona – Anna Domitrovic
- 2:00 – 2:30 – Tombstone...The Town too Tough to Die...Shady Ladies, Shootouts and Tellurium Minerals– Peter Megaw
- 2:30 – 3:00 – 150 years of mining, 100 years of Statehood, 50 years collecting Arizona- Les Presmyk
- 3:30 – 4:00 - Arizona Gold – Erik Melchiorre

2012 Dues Are Overdue!

Please see Betty Deming, the treasurer, at the meeting or send to her address.

2922 W. Claremont St.
Phoenix, AZ, 85017

Dues Rates:

Families & Couples: \$20.00

Single Adults: \$12.00

Juniors (under 18 yrs): \$2.50

Life Members: (Club Member 25 yrs.):
No Charge

WELCOME NEW MEMBERS!

*Glenn Cook
& Linda Watson
Phoenix, AZ*

*Sarah Rosengren
& Lucy Dorn
Scottsdale, AZ*

**Joined
December 2011**

2011 Officers and Committees

PRESIDENT

Roger Deming
(480) 633-0731

Rogersweeps@yahoo.com

VICE PRESIDENT / CLUB FIELD TRIPS

Ed Nichols
(480) 636-1251

epidote555@yahoo.com

TREASURER / COALITION FIELD TRIPS

Betty Deming
(602) 242-1553

azrockhound02@yahoo.com

NEWSLETTER EDITOR & SECRETARY PRO-TEM

Lois Splendoria

lois.splendoria@gmail.com

MINERAL CURATOR / LIBRARIAN / DOOR PRIZES / HOSPITALITY

Bob Holm
(623) 247-1325

REFRESHMENTS

Lynne Dyer
(480) 396-2393

unodyers@hotmail.com

STATUTORY AGENT

Terry Dyer
(480) 396-2393

unodyers@hotmail.com

WEBMASTER

Patti Polk

rockhound_86326@yahoo.com

BOARD OF GOVERNORS

Lynne Dyer
Terry Dyer
Bob Holm
David Lay

ROCK SHOWS - JANUARY & FEBRUARY 2012

January 1 - February 28, 2011 - Quartzsite Desert Gardens Intl. Rock & Gem Show

P. O. Box 2818, Quartzsite, AZ, 85346
1155 Kuehn Street, ¼ mile east of exit 17
Hours: 9-6. Admission and parking: Free
Dealers Contact: Sandi McAllister,
928-927-6361
Website: www.desertgardensrvpark.net
E-mail: dggemshow@ureach.com

January 7-16, 2011 - Quartzsite Tyson Wells Rock & Gem Show

Tyson Wells Show grounds
100 W. Kuehn St., SW
Corner I -10 Freeway & Hwy 95
P. O. Box 60, Quartzsite, AZ 85346,
928-927-6364
Website: www.tysonwells.com
E-mail: tysonwells@tds.net
Admission and parking: Free

January 14-16, 2011 - Globe 54th Annual Gila County Gem & Mineral Society Show

Gila County Fair Building
Hwy. 60, 3 miles north of Jct. U.S. 60-70
Globe, AZ, 85501
Show site phone: 928-425-5924
Sponsored by: Gila County Gem & Mineral
Society, P.O. Box 487, Miami, AZ, 85539
Hours: Fri., Sat. 9-5, Sun. 9-4
Admission: \$2.00 donation, children free
Parking: Free
Show Chairman: Val Latham,
602-466-3060, val65@cox.net

January 21-30, 2011 - Quartzsite Tyson Wells Sell-A-Rama

Rocks, Gem-Arts-Crafts
Tyson Wells Show Grounds
SW Corner of I-10 Freeway and Highway 95
Quartzsite, AZ
Website: www.tysonwells.com
Admission: Free
Show Chairperson: Kym Scott (at address
below)
Dealers Contact: Tyson Wells Sell-A-Rama,
P.O. Box 60, Quartzsite, AZ, 85346,
928-927-6364 (mail 6-8 months ahead)

January 19-23, 2011 - Quartzsite Pow Wow Gem & Mineral Show

Located in the center of town on Mesquite &
Ironwood Drives, Quartzsite, AZ
Website: www.qiaaz.org
Sponsored by: Quartzsite Improvement Assoc.
Dealers Contact: Donna Hiller, P.O. Box 881,
Quartzsite, AZ, 85346-0881, 928-927-6325,
Fax: 928-927-4503
Admission and parking: Free

January 27 - February 12 2011 Tucson 22nd Street Mineral, Fossil & Gem Show

600 22nd St. & I-10, Tucson
Hours: 9-7
Admission and parking: Free
Website: www.22ndstreetshow.com
Sponsored by: Eons Expositions
Dealers Contact: Christine - (516) 818-1228
Email: lowellcarhart@yahoo.com

February 9-12 - Tucson 58th Annual Tucson Gem & Mineral Show "Minerals of Arizona"

Tucson Convention Center
260 S. Church St., Tucson, 85701,
(520) 322-5773
Hours: February 9-11 - 10 a.m.-6 p.m.,
February 12 - 10 a.m. -5 p.m.
Website: www.tgms.org/2012show.htm

**Martin Luther King, Jr.'s
Birthday
January 15, 2012**



**Observed
Monday
January 16
2012**

LOIS SPLENDORIA, EDITOR
MINERALOGICAL SOCIETY OF ARIZONA
2922 West Claremont
Phoenix, AZ 85017-1629

Address Correction Requested

EXCHANGE

**EDITORS: Please
send all newsletters
to the return address
listed above.**

First Class Mail

Mineralogical Society of Arizona
Founded 1935
A Non Profit Organization
www.mineralogicalsocietyarizona.org

Purpose: To promote popular interest in the various Earth Sciences, and particularly the fields of Geology, Lapidary, Mineralogy, and related subjects. ID badges are available from the Treasurer.

Meetings: 7:00 p.m. *on the second Thursday of the month, September through June, at the Church of the Beatitudes, 555 West Glendale Avenue, Phoenix, AZ, 85021.*

Dues: Families & Couples - \$20.00, Single Adults - \$12.00, Juniors (18 yrs. and under) - \$2.50. Please mail your dues to:

Betty Deming
2922 West Claremont
Phoenix, AZ 85017-1629

Newsletter: Reprinting permission granted with proper credit given. Unless otherwise noted, articles are written by the Editor.



AFFILIATIONS



www.rmfmts.org



www.amfed.org